

SJT-WZB

V1.2

SJT-WZB

1.3

	SJT-WZB-V0		

1.

1.4



1.4

ID

CAN

1.6

30

20-30

30

20

SJT-WZB



"" ID "" "" "" "" "" ""

15

2



"" ""

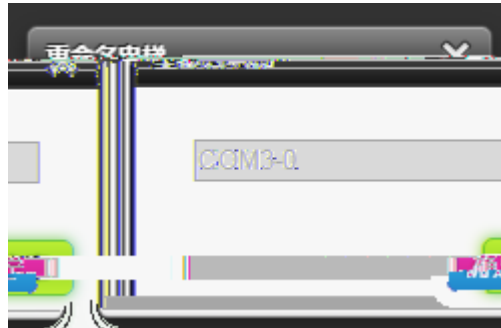
20



20

3

" - " " COM3-0"

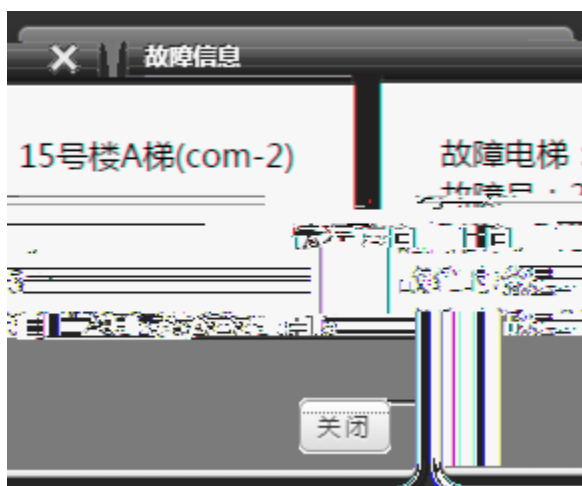


4



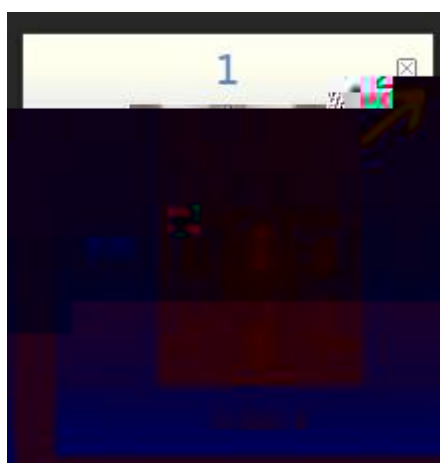
1

5



6

" X"



7



" "



" " "

8



2

2.1

2.1

BL3

J6-5

CAN_H, J6-6

CAN_L

2.2

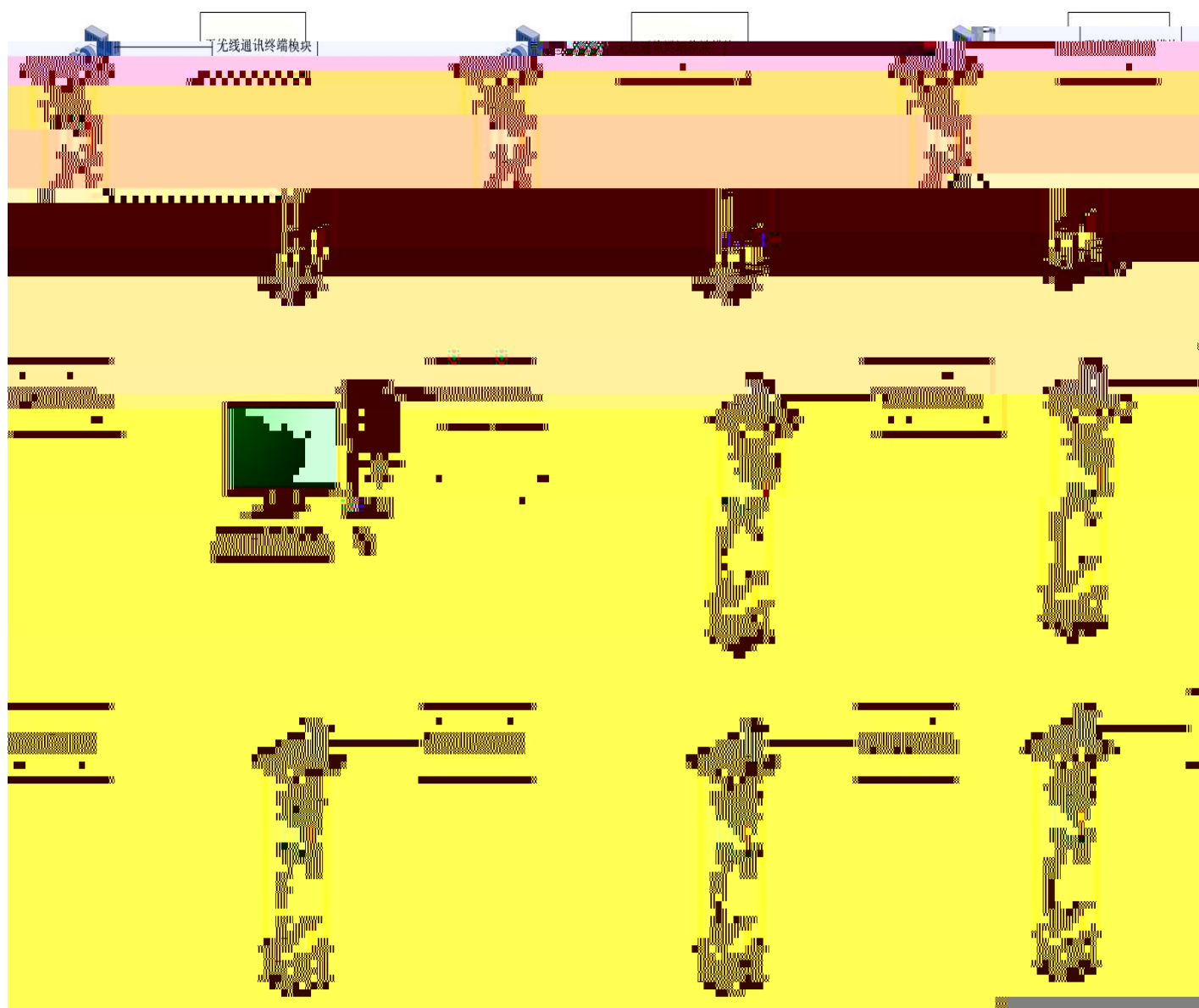
1



3

3.1

3.2



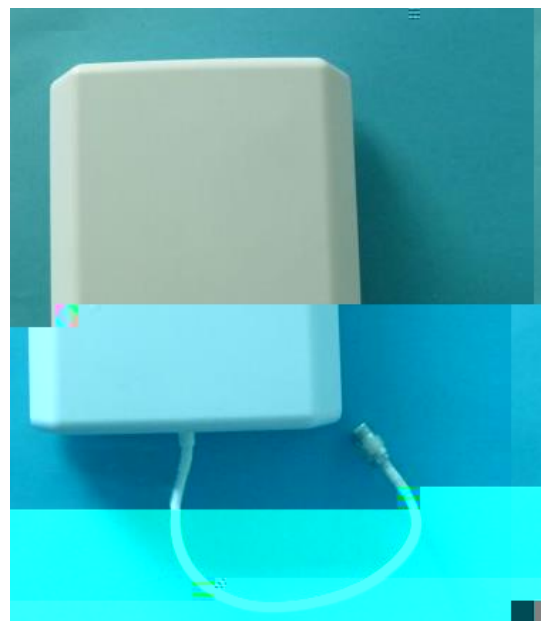
3.1

“ ”

3.3



3.2



3.3

3.4

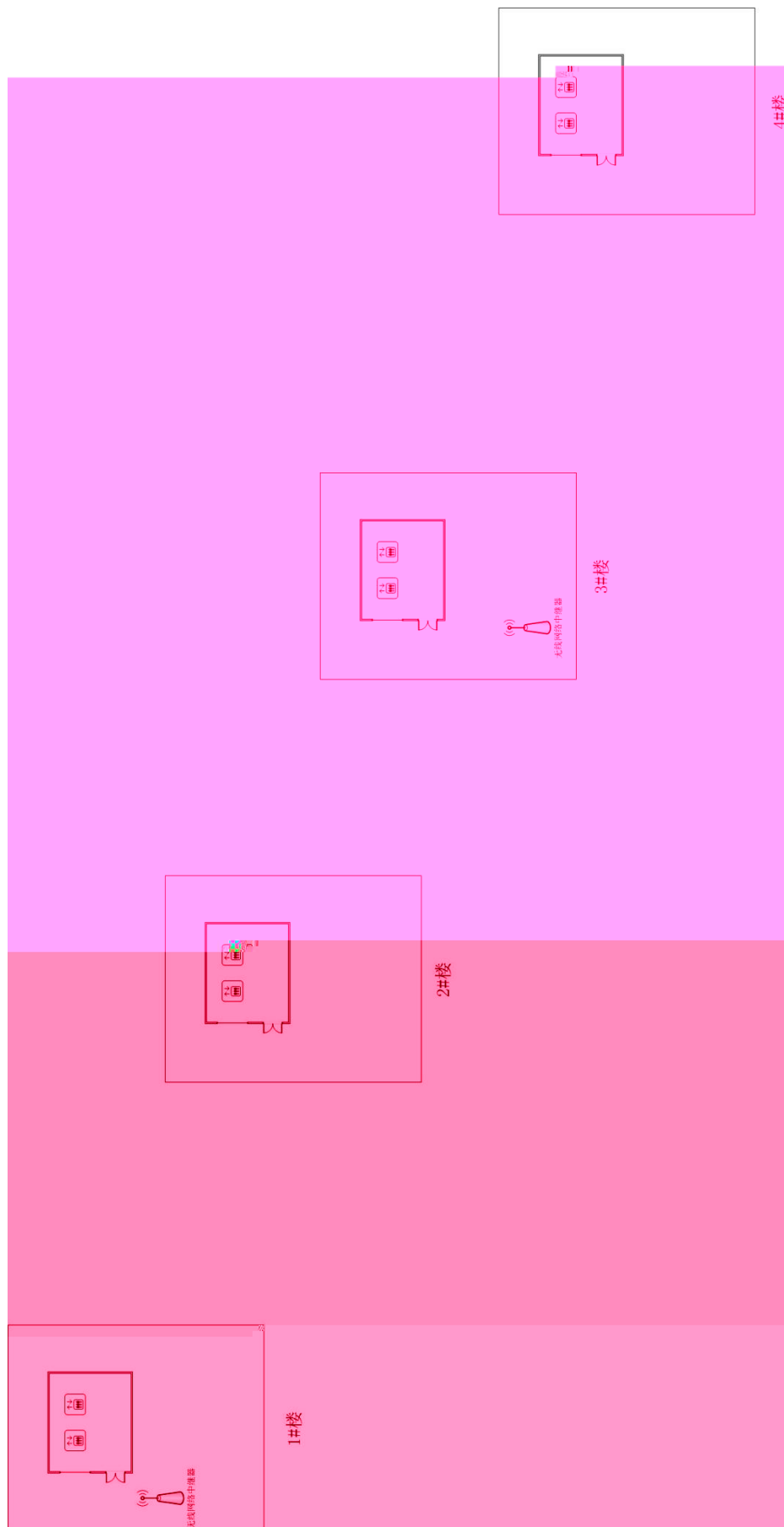
3.4

3.4

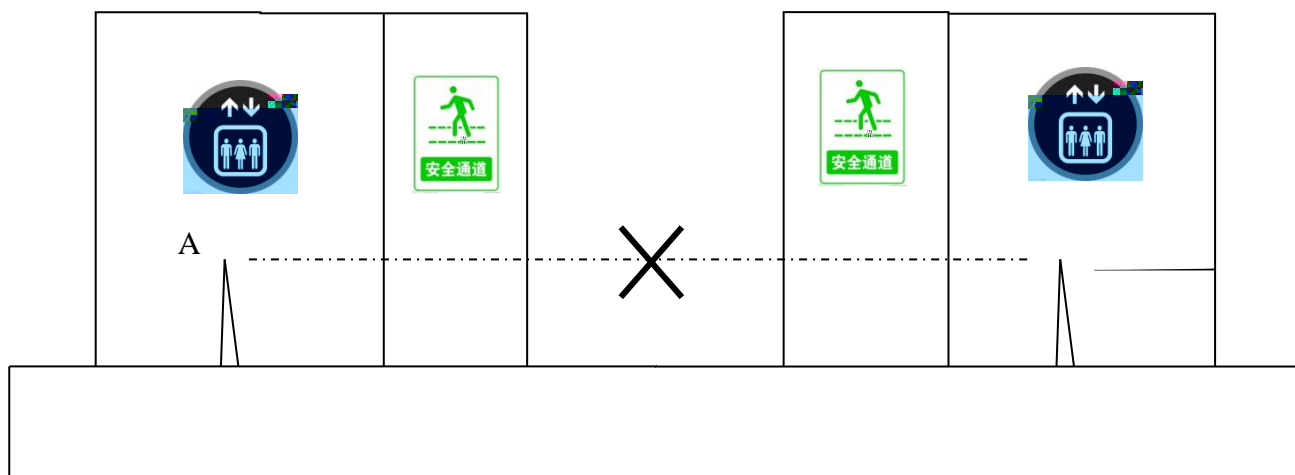


3.4

1									
2		220VAC		24V					220V
				24V					
3									
4									
5									
				5.5	1#				
1#	2#	3#					3#	4#	



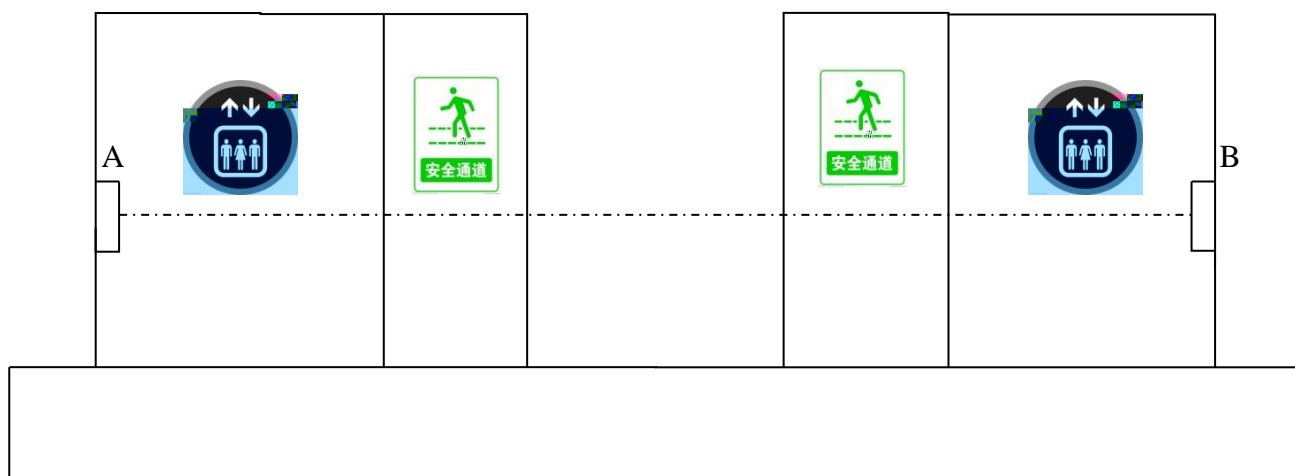
3.5



3.6

3.6

2



3.7

3.5

- 1 A B
- 2

3.6

3.6.1

1

2

3

4 J6-1 J6-2 " +24V" " GND" , J4-1, J4-2, J6-5 J6-6
" CAN+" " CAN-" J4-3 J4-4(" 4. ")

1
 2 " 3.3
 " "
 3 J6-1 J6-2 " +24V" " GND" , J4-1, J4-2, J6-5 J6-6
 " CAN+" " CAN-" J4-3 J4-4(" 2. ")
 4

3.6.4

ID

ID

1~50

3.6.5

5.9 ID

5.8
 Con0

P-06
 ESC

ID

Fun0
 LED
 20

Fun1
 H L

ENT

LED

P-XX
 Con1

Con1

Con0

3.6

4

4

4.2.2

11-26 16

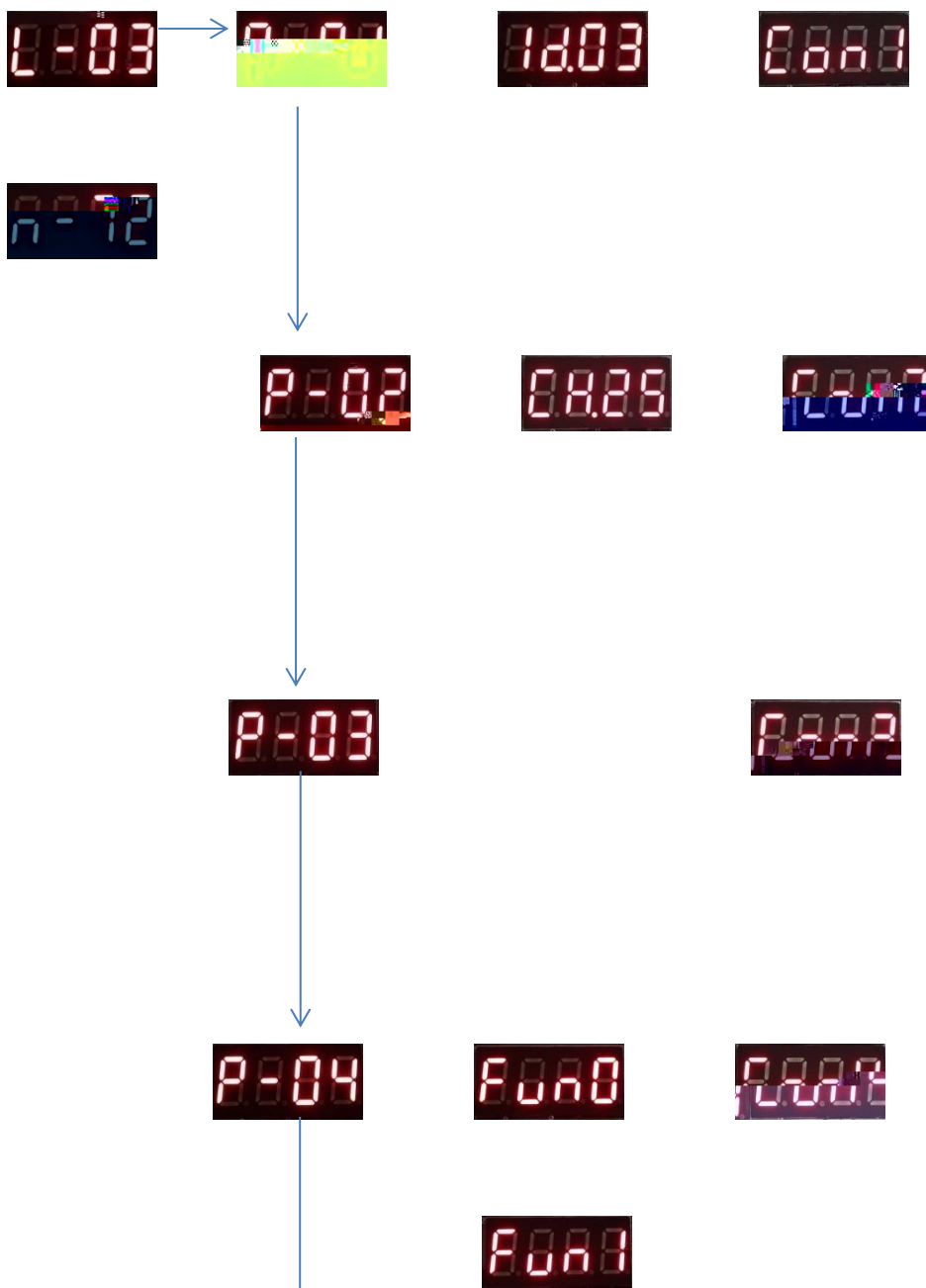
1

30

99

20

2.4G
ID



4.3